



## **NEWSLETTER:**

### **September - October 2018**

September was another busy month. At the beginning of the month we had our return visit to the Midlands Koi Association, The Potteries Koi Club visited us, there was also the All England Koi Show which many of us went down to. We had our return visit to the Potteries Koi Club on the 14th October and the Last Supper on the 21st October was a dealer visit to some of our sponsors.

With the Autumn season upon us and winter fast approaching, there has been a noticeable change in the weather. There have been a couple of unusually warm days but the overall temperatures are certainly on the decline. Many of us are covering or have covered our ponds and doing the routine health and filter checks in preparation for winter.

**Keep an eye on the Forum for offers from our fantastic sponsors of new stock arriving and sales.**

**Also if you haven't already got your name down for the Christmas dinner then please do so along with your menu choices.**

**We look forward to celebrating with our members.**

#### **Upcoming Events 2018**

- **Saturday 22nd & Sunday 23rd September**  
All England Koi Show.
- **Sunday 14th October** - We visit the Potteries Koi Club.
- **Sunday 21st October** - Last Supper.
- **Sunday 18th November** - Winter meeting, Corin Tomlinson gives a talk on Bonsai care.
- **Sunday 2nd December** - Christmas Dinner.  
Details on forum in the Members Section.

#### **2019**

- **Sunday 17th February** - Winter meeting.
- **Sunday 14th March** - AGM.



# Midlands Koi Association

Sunday 9th September we all jumped on a mini bus and headed down to the Midlands for our return visit. The first stop was to Sandra Brown's for breakfast, She has some stunning koi housed in two ponds. It was built in 1992 and both ponds were initially connected via a small stream. This was routed underground to save on the heating bill and the filters were upgraded to Bio-Qubes in 2013. The main pond is an oval shape holding approx. 14,000 gallons. The smaller egg timers shaped pond is around 3500 gallons. A total



of 18000 gallons. Each pond has 2 bottom drains which each feed a Bio-Qube 800, then fed back to the pond via a waterfall and 2 side returns. A 400 Bio\_qube runs on the small pond skimmer line and returned as if the stream were still running. There is a total of 375W UV clarifiers installed along with a heat exchanger and gas boiler for heating. Sandra also has a 1800 gallon hospital tank tucked away

which has its own Bio-Qube 600. Bacon and sausage butties were greatly accepted and it was washed down with a cup of tea or coffee. The hospitality was fantastic.



Where the stream was (above). A Bio-Qube, QT Pond (bottom left), lower pond (left), main pond (Right).





The next stop was Adam and Kelly Brogan. What a spectacular house this was. Their pond has been revamped in spring. Holding 3500 gallons it is fed via an aerated bottom drain to a Nexus 320. this is the pumped to a Bubblebead filter and two 55W UV clarifiers the back to the pond. They have made provisions to eventually heat with an ASHP which they hope to install before winter sets in. They have a huge garden where they also keep chickens and goats. We all made friends with the dogs, one of which was a bulldog puppy still to grow into its skin.

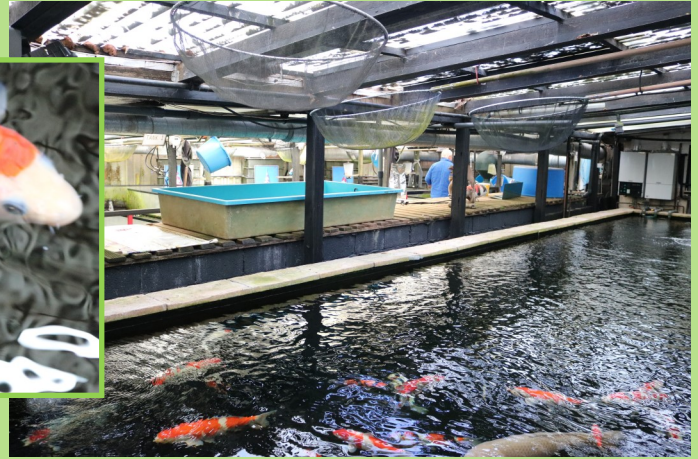


Paul making friends with the residents.  
The filter, pond, koi and chickens.





We had a slight detour and ended up at the Koi Collection before going to the next pond.



Lunch stop was at Robert and Sandra Jacobs. Built in 2000. it was built with a concrete base, block walls and rendered before being fibreglassed. It used to have a couple of vortexes but the system has been upgraded and now runs via two bottom drains to an Oase Drum to a couple of multibay filters holding brushes and matting. Water is returned to the pond via an ASHP. Their garden is beautifully tended to and



has various flowers and shrubs growing in a good sized plot. There was even a hot tub with a grape vine growing over the pergola which Sue enjoyed. There was also a fabulous selection on cakes!



Bob netted some of his collection for us to have a better look at. He had some lovely koi in his pond and all appeared to be in good health. So after filling our faces we headed off to the next destination.....







Pond 4 belongs to Lee and Emily Cresswell. The main pond is 3700 gallons. Made out of bricks and blocks and lined with fiberglass it has two large infinity style windows. One is 2m long and 1m (pictured) deep and the other is 1m square. This pond is filtered via two aerated BDs to a Profi-Combi 50 drum. The bio side holds 350 litres fluidised media which then gets fed to a three tier shower with midwater returns to the pond. There is no skimmer. Lee has some huge koi and has won a



few awards at the shows. In his garage he has a 900 gallon quarantine/grow on tank. This has a single 4 inch side drain that feeds to a nexus 200 full of media and is heated with a 2kw profi heater. It is enclosed with polycarbonate.

The fifth pond we visited belongs to Paul and Irene Shute, this newly constructed pond was completed in May this year and has only been up and running for around three months. It has a concrete base with the walls built from hollow blocks which have been reinforced with rebar and concrete. The pond was insulated with 50mm Celotex before being fibreglassed. It has an infinity window measuring 1200mm x 600mm. The aerated bottom drain feeds to a Nexus 200 crammed



with K1. this then feeds via a Superfish pump to a 55w UV. There is a 2m long air bar running along the back of the pond which has its own air pump. The pond blended in beautifully with the patio and looked to be clad with granite tiles. The contrasting darker coping stones really set it off. There were also some "interesting" ornaments placed around the pond. One more pond...







The final pond we saw belongs to Glyn and Laura Marley. Built in 2003, it has a butyl liner and is a pump fed filtration system. It goes through a UV then the feed splits into two; one goes to a Nexus 210 and the other to a Crystal Air Source Heat Pump. There is a trickle in/out which has a purifier which Glyn says has improved his parameters and overall koi health immensely. There is a decked area that almost hangs over the edge of the pond. Glyn took the time to net his koi for a closer look. He has some lovely examples. It was then time to go to



the Plough Inn for the carvery. This was very kindly paid for by our hosts, we all had a fantastic day with excellent hosts and company.





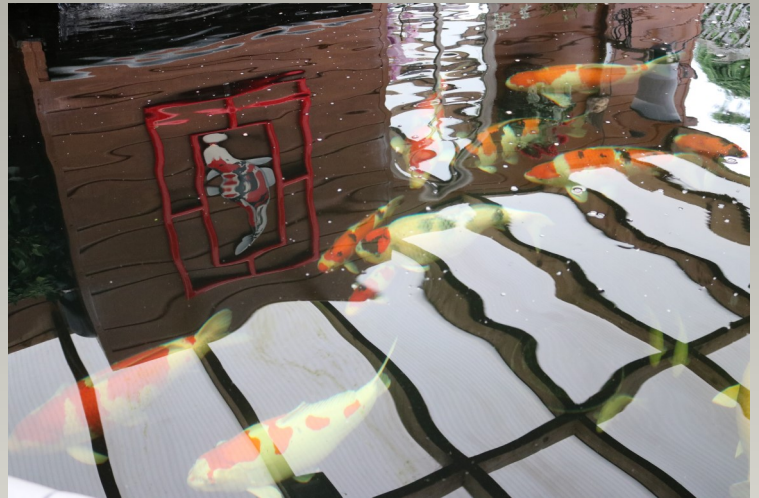
# Potteries Koi Club

## visit the YKS

On Sunday 16th September the Potteries Koi Club came to visit us. The first stop for breakfast was at our Chairman Jim's place. As usual Mandy did us proud and there was plenty to go around. Chase was the welcoming committee and Jim decided to "Ape" around by climbing his apple tree to shake a few branches for the apples. Our guests were thrilled with this and went away with a big carrier bag full. Once our bellies were full and all the fallen apples had been collected we made our way onto the next pond.



The second visit of the day was to Kev Colbeck's lovely pond.



Our guests spent time admiring his collection of koi and asking him questions. The drum filter nearly made one of them jump out of her skin when she ventured inside the filter house. All too soon it was time to move on to the next destination.





Next up was first timer Bob Morris popping his pond opening cherry. What a beautifully put together pond and garden. He has made full use of the space available. There were a few changes since I last saw this pond too. He has a Denby koi pond which he has clad in wood.



There is a window in the pond. A polycarbonate roof sits over the pond for added protection and well made jump screens to prevent any koi doing a “Free Willy” impersonation. A seating area overlooks the pond and is also protected from most of the elements. His filter house is well organised considering the space was limited. He has however found space for a coffee machine, essential in cold weather. The cakes and cookies were delicious.



The next pond was Paul & Sue's. There was a bit of a navigation error and our guests got a little lost which knocked the times off somewhat. We had lunch here before setting off for the next pond. We still managed to squeeze in a surprise for them.

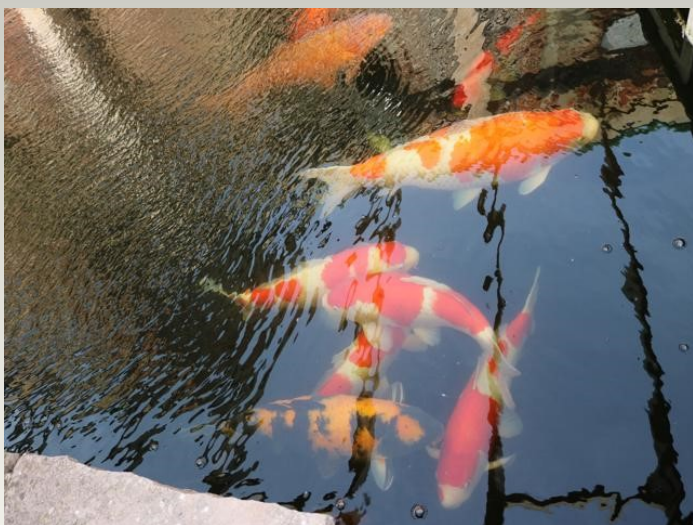






After a longer drive than our guests anticipated they arrived at our pond for a quick brew and a flying visit. This was certainly a whistle stop tour and before they knew it they were getting back on their bus heading to the last pond.

Pete and Caroline Houseman was the last one to visit. We had a raffle here and spent time looking around the garden, pond and filters. The dogs were playing with stick and jumping over fences too.



After the raffle and looking around it was a short drive up to the Anchor at Whixley for a well earned carvery. Unfortunately due to the bus driver needing to head back and time delays the Potteries were unable to join us for the meal but stayed for a quick drink before heading back home. It was overall a good day with nice weather once the sun came out.

We will see them again soon on our return visit....



# Potteries Koi Club Return Visit

On Sunday 14th October we had our return visit to the Potteries Koi Club. It was unfortunately a wet and rainy day so we came prepared with our waterproofs. There were four ponds and a dealer visit on the agenda for the day. We set off on our minibus and headed to the first pond which belongs to Derrick and Norma Steele. We were provided with a very warm welcome, hot drinks, sausage and bacon butties which were gratefully accepted and devoured. This pond fortunately had a roof on it along with a covered seating area. The garden was very much in a Japanese theme, on entering the garden we were greeted with a lovely pagoda ornament with a beautifully decorated path. They also had some very ornate furniture. The pond itself was filtered with a very large multibay system comprising of plenty of fluidised K1 and a bay of Japanese Matting.



After breakfast we battled through the rain and went onto the next pond which was around fifteen minutes away.



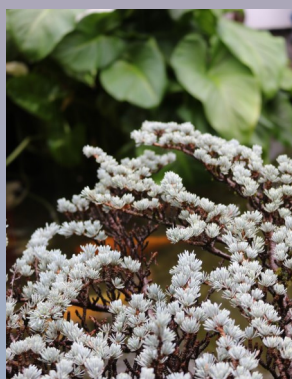
Neil and Linda McKellar are the owners of the second pond we visited. This pond is well over 7000 gallons which relies on natural filtration using gravel and planting. To add movement to the water there was a lovely waterfall. It was certainly something special to look at with a newly renovated bridge over the pond, overhanging trees and huge Calla Lilly's which were still in bloom. The water was crystal clear and there was a reasonable number of koi



living in it. There were little paths leading off to other areas which included a bar and there was even an old quarantine facility which has not been used for a long time. There was a big gorilla sitting in the bushes and the acers were looking so



bright and colourful. Their leaves were such a vibrant red, it was difficult not to admire them. The koi seemed to like sheltering under the shrubs and we seemed to be doing the same!







The third pond we visited was owned by Sam and Joyce Gleaves. The rain still persisted. This pond has a bottom drain which then feeds to a sieve, then pumped to a bead filter and a protein extractor. The pond was built quite close to the house and can be seen from their conservatory. The garden then slopes down away from the house with the filters hidden in their

own shed at the end of the pond. At the bottom of the garden is a summer house.

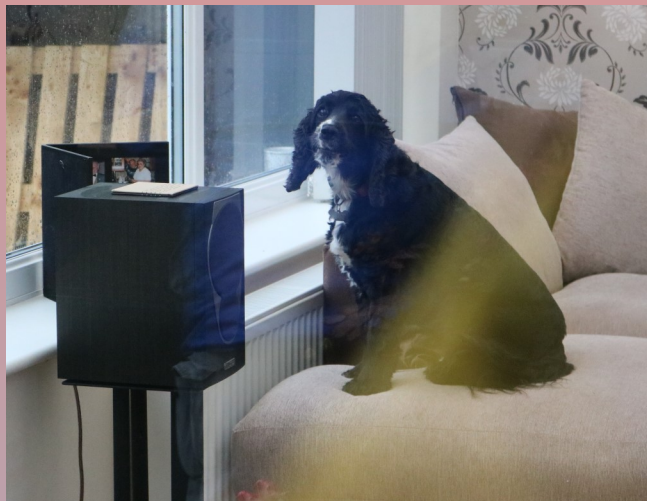


This was also our lunch stop and we were spoilt for choice with pizza, crisps, cakes and biscuits. There was also a raffle after we had eaten. There were plenty of koi in this pond, one of which looked to get the food first. It certainly was a large unit. After lunch we then went on to the final pond.

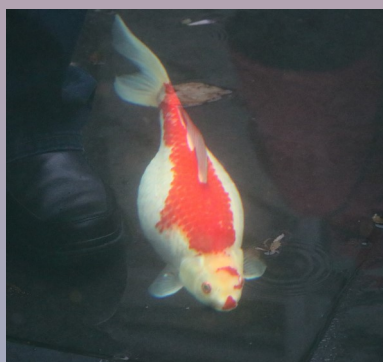




The fourth and final pond we visited belonged to Rick and Samantha Johnson, unfortunately they were not available so someone kindly opened the pond up for us. There was one resident home though.



They had a modern looking pond with a water blade and a large infinity style window. The filtration was an Oase drum and bio combi. The cream render was set off well with the dark brick copings. A wooden pergola sat over the top of it. They had a mix of koi and a couple of Tamasaba's.



Then it was onto the next destination, Sunny Bank Koi. A relatively small dealership with a variety of koi at not too bad a price. There were all sorts of varieties here and many small koi that would be good





For a grow on project. The store itself was fresh and clean looking with a resin floor. Next door was a garden centre which you could visit if in the area again.



Afterwards we were treated to a buffet and hot drinks at the café in the garden centre grounds. Amazingly it had finally stopped raining! Thanks were given by both chairmen. It was then time to finally make our way home. I think it is safe to say we all had a lovely but damp day and the hospitality was exceptional.





# The Last Supper

Sunday 21st October was the Last Supper. We all met at Jim's for breakfast in the morning. Bacon, sausage and peck butties were washed down with cups of tea and coffee. We were then set up ready for the



journey ahead. The next port of call was to see Chris of Koimasters. Although most of his tanks were empty he still had some small koi on offer. There were a few vats where he was keeping his koi fry. Some of them were tiny compared to the others.



He did however have his good supply of dry goods still available at good prices. After a look around we headed off to our next dealer.



Ady and Hayley at Barnsley Koi put on a fabulous spread for us which was very generous of them. They have some lovely koi in store. Near the roller doors was the fancy goldfish tanks which will soon be going to make room for more dry goods and a new koi holding tank.



Having been fed and watered we then headed onto the next location.





Next up was a visit to Paul and John at A19 Koi. There were some lovely little koi on offer here along with a good selection pond filtration, drums, dry goods and garden ornaments.

It was soon time to make a move onto the next destination. Some of us even managed to sneak a peek at Andy and Gina Clayton's pond which the rest of us got lost trying to negotiate the road closures and diversions!



We all eventually made it to Tunnel Koi located in the grounds of Vertigrow plant nursery. We spent time chatting to Colin and looking

at his koi and the tropical fish section. It was then time to make our way to Pete and Caroline Houseman's place for a quick visit before the carvery at The Anchor in Whitley.





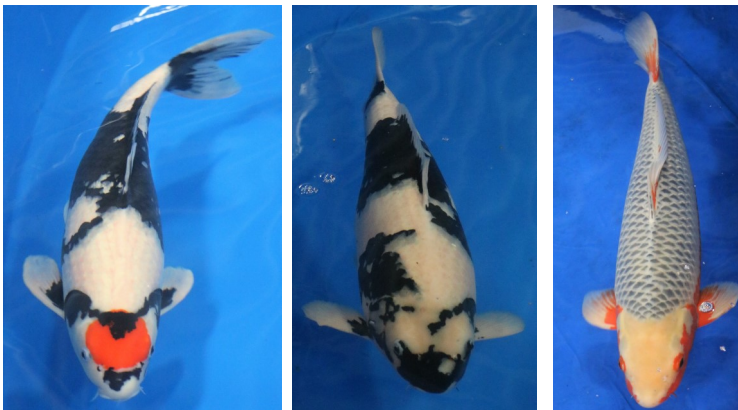
# The All England Koi Show 2018

The weekend of Saturday 22nd & Sunday 23rd September was the much anticipated All England Koi Show. Being one of the main shows in the UK means there is some very tough competition for those who are competing. But, it is also the chance for us to admire and drool over some of the best koi in the country.

There was also the chance to get yourself a new addition or maybe stock up on food and pond additives from one of the many stalls and dealers who were attending.



There was some stunning sculptures and koi themed garden ornaments available.







Well done to our club members Wayne Taylor for winning Superior Champion with his size 7 Matsue Kohaku which was Supplied by Yume Koi (pictured on the left, images from the South East Koi Club).



Congratulations also to Paul Williams on winning Adult Champion with his size 5 Ueno Showa also supplied by Yume Koi (pictured on the right, images from the South East Koi Club).



### Additional awards

Wayne Taylor.  
Best in Size 7, 1st place Kohaku.  
Best in Size 6, 3rd place, Utsurimono.  
Size 7 Kohaku 1st place.  
Size 7 Sanke 1st place.  
Size 6 Utsurimono 1st place.  
Size 5 Utsurimono 1st place.  
Size 5 Koromo 1st place.

Paul Williams.  
Best in Size 5, 1st place Showa & 2nd place Sanke.  
Size 5 Sanke 1st place.  
Size 6 Showa 3rd place.  
Size 5 Showa 1st.  
Size 6 Hikari Moyo 1st place.  
Size 5 Kinginrin 1st place.  
Size 6 Tancho 2nd place.

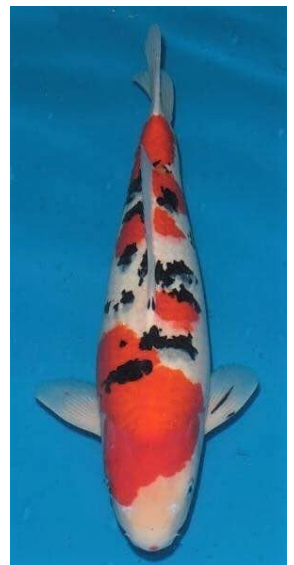
Paul Williams:  
Sanke, size 5.  
BKKS Judges  
Standards  
Committee Award  
(below)

Once again, well done to both of you. I'm sure you were both pleased with your results.

We shall be looking forwards to next years shows and the chance to catch up with club members and people we have not seen for a while, as well as admiring some fantastic quality koi.

Wayne Taylor:  
Goshiki, size 5

Nishikigoi Vereniging  
Nederland (NVD)  
Friendship Award  
(Above).



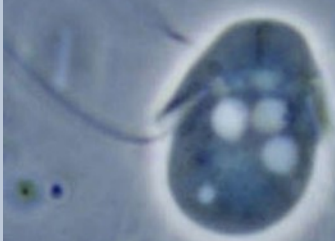


# **FOCUS ON..... Hexamita (Octomita)**

Hexamita was previously called Octomita until around 1960. It is an “endo-parasite” meaning it lives mostly internally. There are two most common species of Hexamita are “H. Salmonis” or “H. Truttae” (these two occasionally being classed as the same sub-species) and “H. Intestinalis”.

This is a flagella parasite approximately 3-6 microns wide and up to 12 microns long (smaller than Costia). They are shaped like a tear drop although just prior to splitting they become more spherical. This

Much smaller than Costia  
Almost round



koivet.com

parasite was renamed due to the 6 “flagella” or arms at the wide end and two at the posterior, this is why it was

named Octomita previously. These arms or flagella are around 1.5 times the body length and allow it to move about.

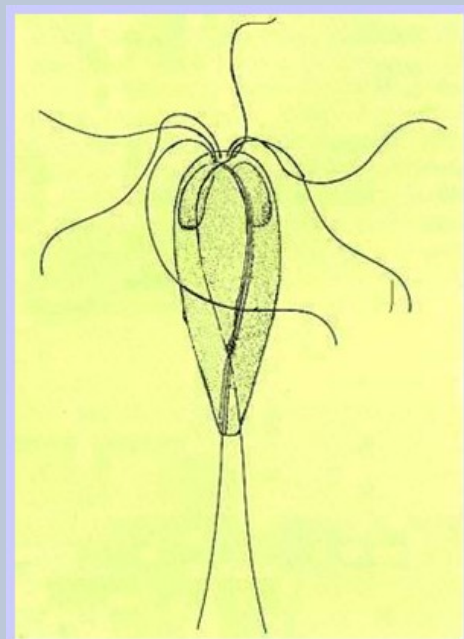
It is usually found internally in the intestinal tract of koi and goldfish. It can also be found in the heart, liver, gall bladder, blood and the peritoneal cavity. It is not a very commonly found parasite which is probably why it is not very well known.

## **Lifecycle.**

Hexamita reproduce on/in healthy fish at their normal rate by longitudinal binary fission. In certain conditions for example when the host fish is weak or unwell, this parasite will take full advantage and they can reproduce at an extreme rate. This is referred to as “Schizogony”, this is when the nucleus divides multiple times. This process is achieved by the Hexamita invading and taking over the epithelial cells of the intestines, the Hexamita nucleus combines with the cells nucleus. Binary fission then takes place, usually in less than 24 hours, then newly developed “Merozoites” are ready to infect more cells starting the process again.

## **Symptoms**

Affected fish become increasingly thin. It can take many months to show any signs of infection, even more so if the fish was previously very healthy and the infection is low. They may look emaciated. The affected fish’s abdomen may become swollen/distended and look very similar to Dropsy. A yellow/white mucoid material may





## **continued.....**

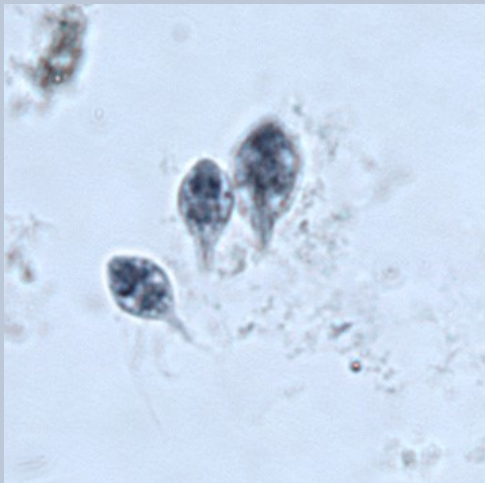
be excreted by the affected fish. Flashing may occur. The gills may be very light coloured. Where there is a heavy infestation, the affected fish will become listless and sulk in the corners of the pond/tank, they will not feed. Their skin will become darker and they will look off colour. Skin and fins may become eroded when there are heavy infestation to the surface of the skin.

### **Transmission**

Hexamita is transmitted via the mouth and there is a possibility it can be contracted via the anal passage. Evidence has also been found indicating that amphibians such as frogs, toads and newts. Hexamita can form a protective cyst which allows it to withstand drying out, allows it to lay dormant in faeces on the pond floor and stomach acid when passing through the digestive tract.

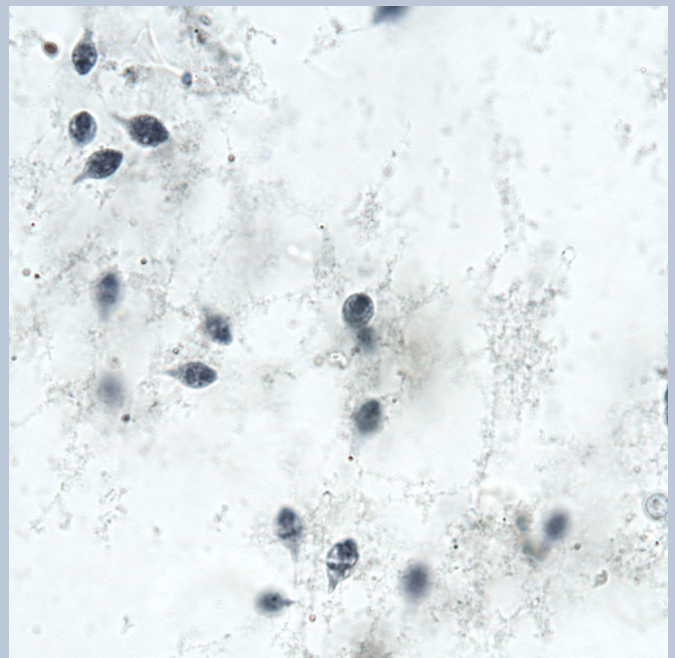
### **Identification**

If a fish dies with no obvious symptoms mentioned above then it may be worth taking samples ASAP of blood and squashed tissues. These samples should be examined using a microscope. If a live fish is thought to have Hexamitiasis then a fresh faeces sample should be taken and examined under a microscope. This latter method would not be suitable for a fish that is not eating as the stomach will be empty and no stools will be passed.



Hexamita can be seen using magnifications of x100 and x400 as long as a thin sample is being used on the slide. This is easy to do with a blood sample but much more tricky when using faeces or tissues. Ensure the tissues/faeces is spread out thinly the squashed tightly between two slides, be careful not to

break them. This process should be repeated using a number of clean slides until a very thin sample is present. When you are satisfied you have a thin enough sample, apply a cover slip or two. Adjust your light settings on your microscope, turn the brightness right up and then adjust the iris until you get a good contrast.





# **continued.....**

## **Treatments**

When in the advanced stages of the disease it is very difficult to treat. The most effective treatment is one that must also be obtained from a vet. Metronidazole Flagyl which is used to treat intestinal bacterial infections and protozoa. It is an antibiotic which also means that your biological filter bacteria will be killed as will any plants. Therefore; it is preferable to isolate the fish into a separate tank.

- Metronidazole Flagyl: for a bath use a 250mg tablet crushed and dissolved in a little warm water, add to 50 litres of water. Measure the water accurately as you may need more volume if the fish is larger. Keep the fish in the treatment for three days and raise the temperature. Use air stones in the tank and a filter containing activated carbon to slowly remove the medication, or do water changes.
- If the fish is still eating then you can use metronidazole as a food additive at 1% by weight of the fish. 10mg per 1gram, or one 250mg tablet to 25 grams of food pellets for 5 days. Mix the pellets and crushed tablets in warm water and gelatine. Divide into daily portions and freeze so that you can thaw out a dose daily each day.

Alternative treatments may be available, however they may not eradicate the problem but merely mask it.



**Before adding any treatments, it is essential that you make a positive identification of the parasite causing the problems.**

Test your water parameters for Ammonia (NH<sub>3</sub>), Nitrite (NO<sub>2</sub><sup>-</sup>), Ph, KH and Temperature.

Always check the product labels. Turn off UVs if it states to do so. Add extra air.

## **References**

<http://www.fishhelpline.co.uk/health/hexamita.html>

<http://www.koiquest.co.uk/Hexamita.htm>

[http://koivet.com/a\\_koi\\_parasite\\_hexamita.html](http://koivet.com/a_koi_parasite_hexamita.html)

<https://alchetron.com/Hexamita>

## **Videos**

<https://youtu.be/YiiOB8k1Q6k>

<https://youtu.be/Okgg0vbrVzo>

<https://youtu.be/sH0RGfJCdis>

<https://youtu.be/nJIMGR2VaYY>

**Warning/Disclaimer:** Medications are used at your own risk and it is your responsibility to calculate dosages accurately according to your pond volume. Check parameters prior to any treatments being administered. The YKS will not accept responsibility for deaths of stock resulting from incorrect usage of chemicals/medication.